

Customer :

customer

Customer part :

customer part

Comment :

Comment

S1=7.64

S2=6.54

Tmax=467

Tp S2=506.0

PI=0.54

HI=97

Sample =1765.80

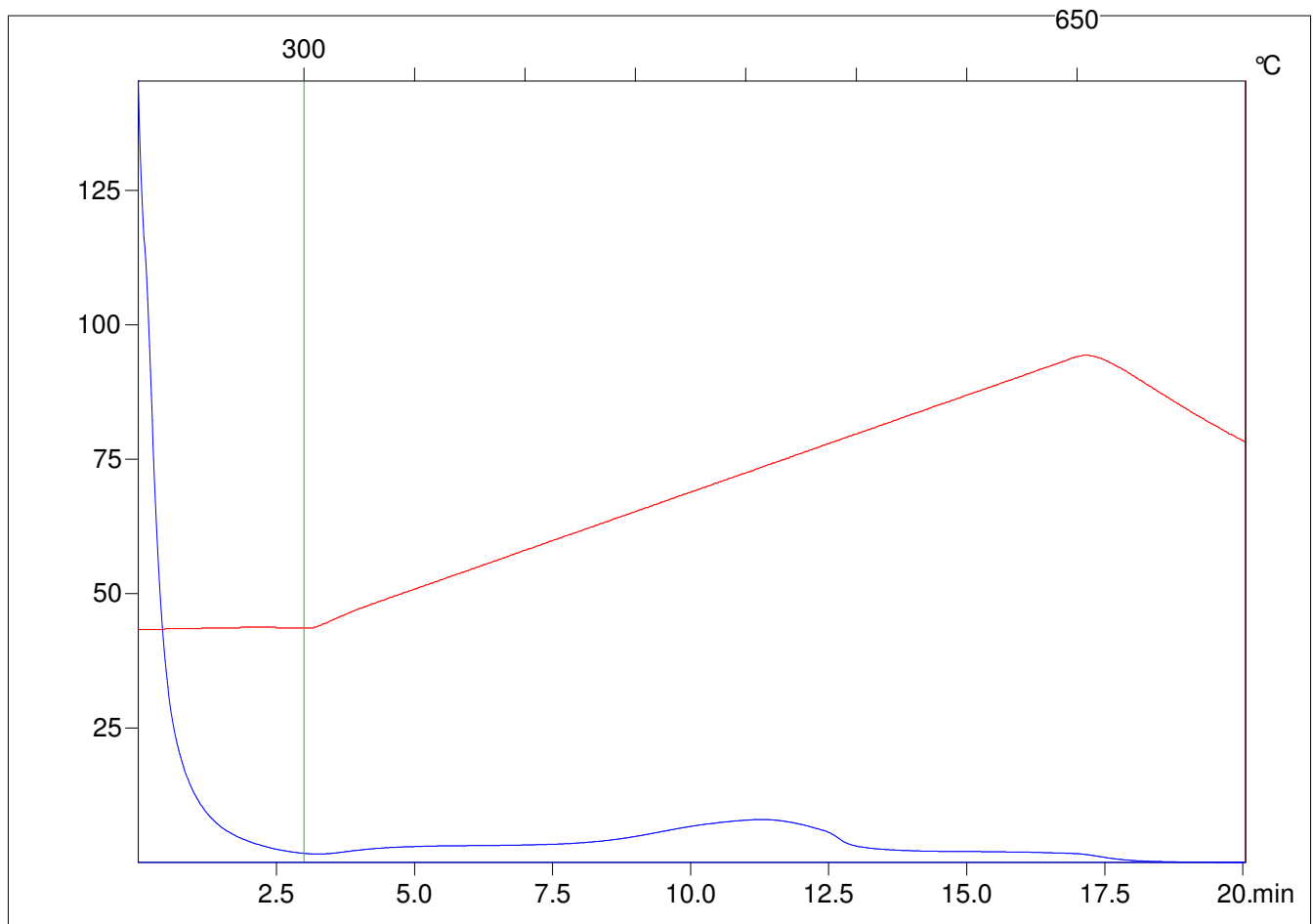
Method =Bulk Rock

Cycle=Basic

KFID(10*9)=1444

Qty =70.7

TOC=6.75



C:\VINC\PK3_1792\PK033.R00 : FID pyrolysis graphic

State

Pyro Status

Oxi Status